

COVID-19 in Long-Term Care Facilities, Saint Louis County Department of Public Health, August 2022

COVID-19 has had a disproportionate impact on residents of Long-Term Care (LTC) facilities. The data below describe the impact of COVID-19 on residents of the 144 LTCs in Saint Louis County licensed by the Missouri Department of Health and Senior Services (DHSS), Section for Long-Term Care Regulation, as well as additional private facilities in Saint Louis County that have reported data to the Saint Louis County Department of Public Health (DPH). Types of facilities include: Skilled Nursing Facilities (SNF), Intermediate Care Facilities (ICF), Assisted Living Facilities (ALF), and Residential Care Facilities (RCF).

DPH works with facilities to ensure aggressive mitigation measures are in place, assist in stocking personal protective equipment, and ensure testing is readily available. This vital work is done in coordination with the State Section for Long Term Care Regulations, who license these facilities, and the Saint Louis County High Risk Task Force. The existence of cases in facilities should not be interpreted as an indictment of the care residents receive — close quarters and the age/chronic health conditions of many residents have made long-term care facilities vulnerable to outbreaks.

LTC residents were also among the first Missouri residents to be eligible for COVID-19 vaccination. [DHSS's vaccine rollout plan](#) lists LTC residents in the tier 1A category, and many facilities in Saint Louis County have held mass vaccination events for their residents.

A variety of recent updates have been made to the recommendations for LTCs during the pandemic, which can be found at the following sites: Missouri long-term care information updates <https://ltc.health.mo.gov/>, and Long-term care Ombudsman program: <https://health.mo.gov/seniors/ombudsman/covid-19.php>.

Data Disclaimers

The following figures and tables were generated from data reported to DPH as of Monday, September 6th, 2022. Numbers will be adjusted as more information is received. For data points of counts <5 or of percentages <1%, the numbers are suppressed (exact numbers not given) to protect the identity and protected health information of individual cases. For subgroups with mutually exclusive categories where the sum of cases in the categories add up to the county-level total, if a single category is suppressed, an additional category is suppressed to disallow overcoming of suppression with simple addition/subtraction. Disclaimers specific to a figure or table will be outlined in the appropriate description.

Data Summary

As of **Monday, September 6th, 2022**, **10,255 residents** have tested positive for COVID-19, and **1,449 of those residents** have died, for a **case-fatality rate of 14.1%** among LTC residents (Table 3, Table 4). These cases account for **3.7% of St. Louis County's COVID-19 cases** and **39.6% of the County's COVID-19 deaths** (Table 4). Among LTC residents, there were **283 newly diagnosed cases** with diagnosis dates in August and **5 deaths due to COVID-19** with dates of death in August (Table 5).

Data Figures and Tables

Figure 1. Reported Number of COVID-19 Positive LTC Residents by Day from 03/03/2020 to 08/31/2022

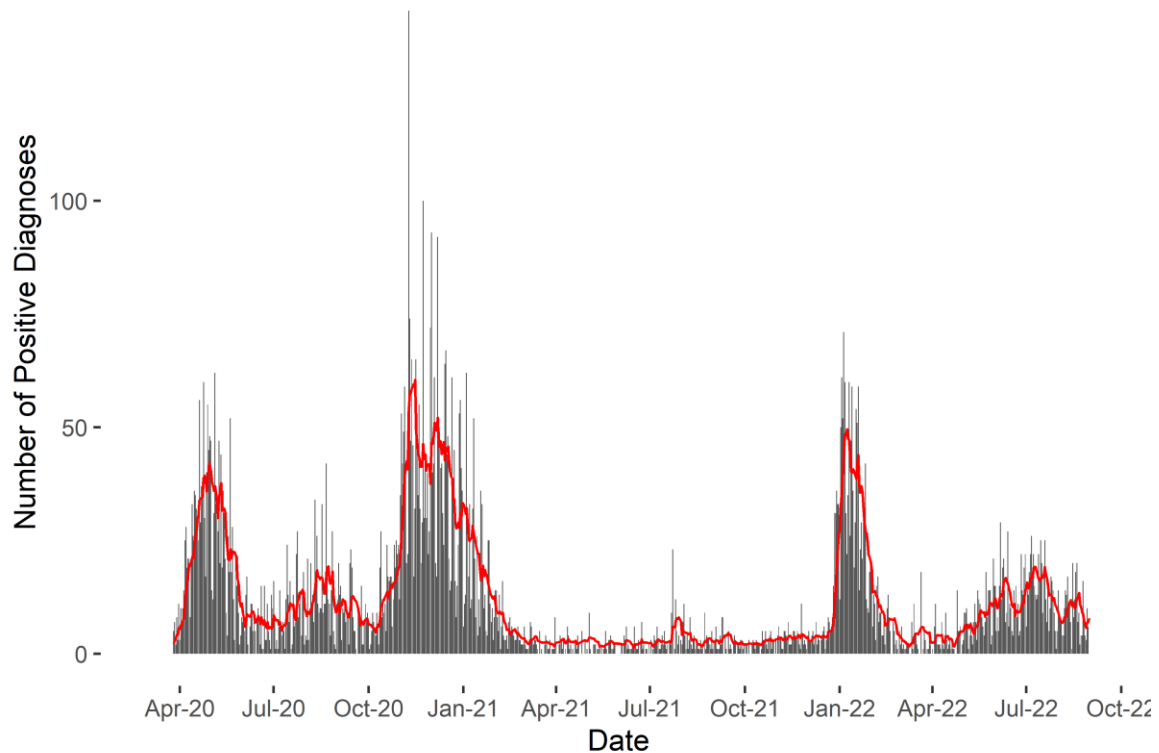


Figure 1 shows the number of positive cases among LTC residents of Saint Louis County from 03/03/2020 to 08/31/2022. The date of diagnosis for LTC residents who were tested for COVID-19 was used to determine the number of positive cases for each day. The red line is a rolling 7-day average.

Figure 2. Reported Number of COVID-19-Related Deaths among LTC Resident-Cases by Week from 03/03/2020 to 08/31/2022*

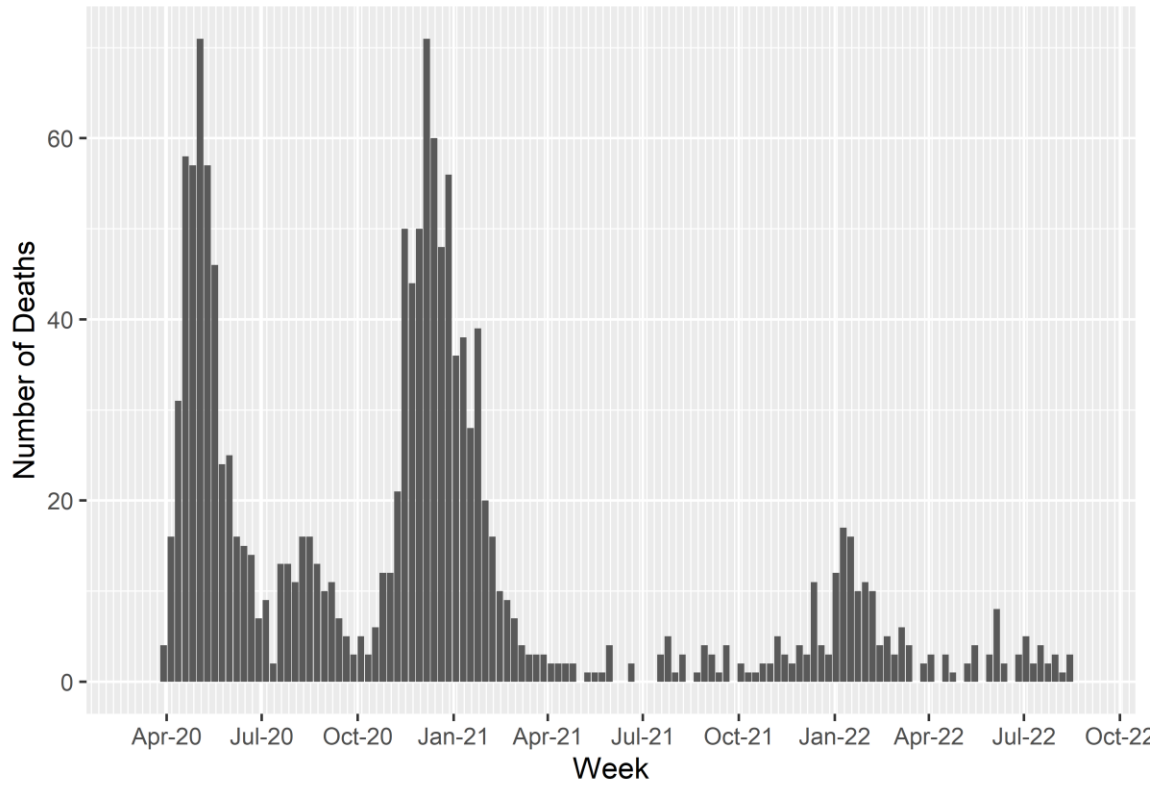


Figure 2 shows the reported number of COVID-19-related deaths among LTC resident-cases from 03/03/2020 to 08/31/2022. Death counts are summarized by week. The date of death was used for determining the number of deaths for each week.

*Deaths are a lagging indicator of the severity of the COVID-19 pandemic. For people who die of COVID-19 infection, the time from onset of illness to death is often several weeks. Saint Louis County DPH is almost certainly not aware of all COVID-related deaths that occurred this past month, as it can take several weeks to file and match death certificate data with COVID-19 surveillance data.

Table 1. Demographic Information for LTC Residents Testing Positive for COVID-19

		# of LTC Cases (n=10,255)	% of all LTC Cases	# of Deaths (n=1,449)	% of all LTC Deaths
RACE	White	6,136	59.8%	1,124	77.6%
	Black or African American	2,191	21.4%	284	19.6%
	Multi-Racial or Other	656	6.4%	14	--
	Asian	Suppress	--	Suppress	--
	NH/PI	Suppress	--	Suppress	--
	NA/AN	Suppress	--	Suppress	--
	Missing Race	1,185	11.6%	13	--
NA/AN: Native American or Alaskan Native NHPI: Native Hawaiian or other Pacific Islander					
Ethnicity	Non-Hispanic/Latino	6,602	64.4%	1,385	95.6%
	Hispanic/Latino	123	1.2%	22	1.5%
	Missing Ethnicity	3,530	34.4%	42	2.9%
Sex	Female	6,567	64.0%	861	59.4%
	Male	3,618	35.3%	584	40.3%
	Missing Sex	70	--	<5	--
Demographic data have been updated and cannot be compared to previous reports.					

Table 1 displays demographic information for COVID-19 cases and deaths among LTC residents, which includes breakdowns and percentages by sex, race, and ethnicity. Demographic data have been updated and cannot be compared to previous reports.

Appendix

Table 3. Case Counts and Percentages among LTC Residents Testing Positive for COVID-19

LTC Resident Cases	% of all Cases
10,255	3.7%

Table 3 displays the cumulative COVID-19 case counts for LTC residents in Saint Louis County since the beginning of the outbreak, as well as the percentage of all Saint Louis County cases that are LTC residents.

Table 4. Death Counts and Percentages among LTC Residents Testing Positive for COVID-19

Deaths	% of all COVID-19 Deaths	LTC Resident COVID-19 Case-Fatality Rate
1,449	39.6%	14.1%

Table 4 shows the number of deaths among LTC residents testing positive for COVID-19, the percentage of COVID-19 deaths who were LTC residents, and the LTC resident COVID-19 case-fatality rate

Table 5. Number of COVID-19 Cases and COVID-19 Deaths in LTC Facilities by Month of Specimen Collection Date and Date of Death

Month	# Cases	# Deaths
Mar-20	44	<5
Apr-20	846	151
May-20	698	217
Jun-20	203	68
Jul-20	282	37
Aug-20	417	62
Sep-20	276	31
Oct-20	378	27
Nov-20	1389	137
Dec-20	1254	261
Jan-21	562	155
Feb-21	153	54
Mar-21	72	18
Apr-21	51	9
May-21	46	<5
Jun-21	55	<5
Jul-21	105	7
Aug-21	93	5
Sep-21	72	12
Oct-21	64	6
Nov-21	99	13
Dec-21	284	23
Jan-22	1090	57
Feb-22	192	30
Mar-22	82	13
Apr-22	97	8
May-22	260	6
Jun-22	372	16
Jul-22	436	14
Aug-22	283	5

Table 5 shows the number of newly diagnosed cases and deaths due to COVID-19 among LTC residents per month