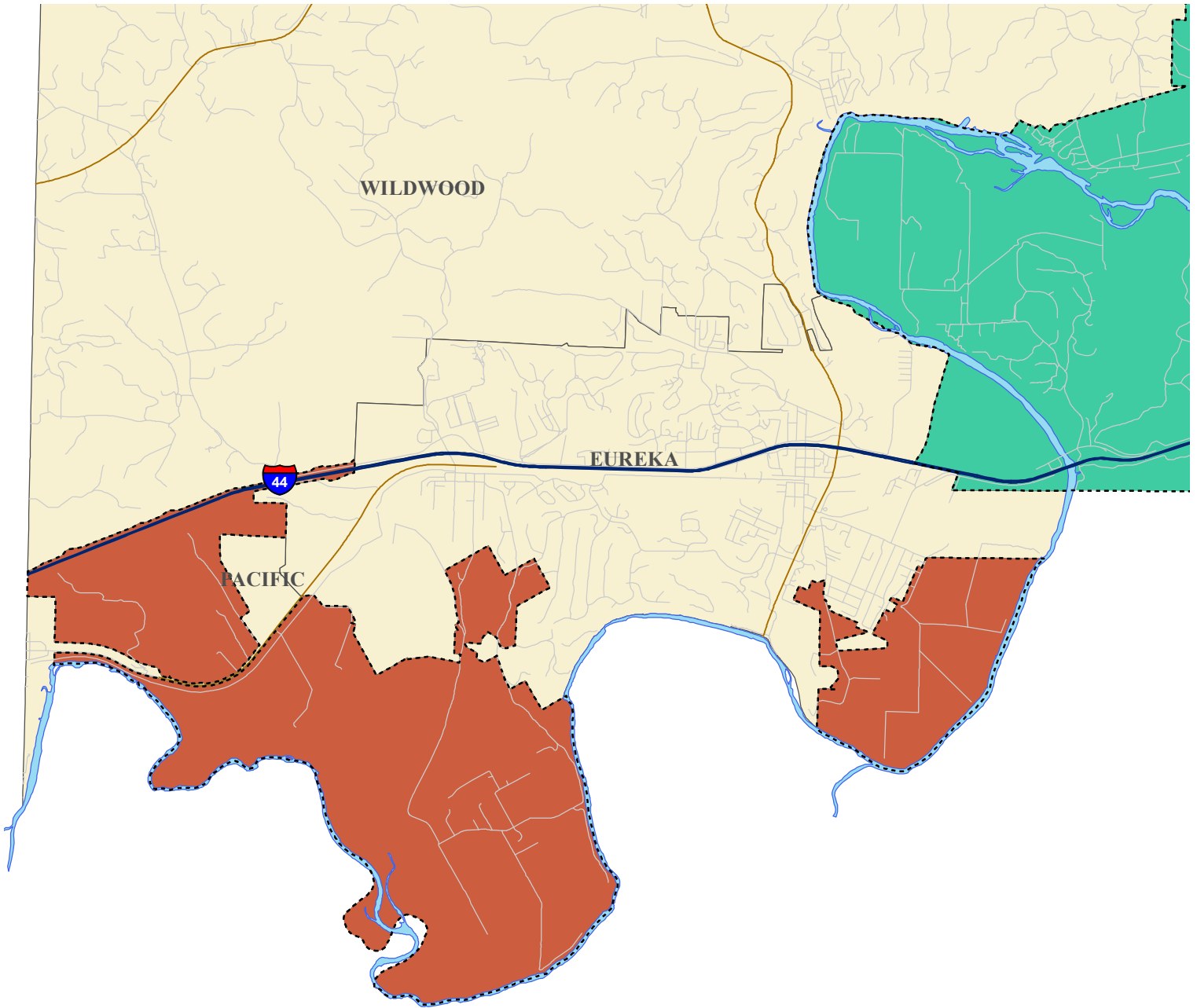









2018 Map Plan for Southwest St. Louis County



- | | | | |
|--|--|---|---------------------|
|  | Proposed Established Unincorporated Areas |  | Interstate Highways |
|  | Unincorporated Areas with a population below 2,500 for which the County will continue service delivery |  | Major Roads |
| | |  | Local Streets |
| | |  | Rivers |
| | |  | Municipalities |

